

Thank you for purchasing AUTEL tool. Manufactured to a high standard, our tool will, if used according to these instructions and properly maintained, give you years of trouble-free performance.

Getting Started



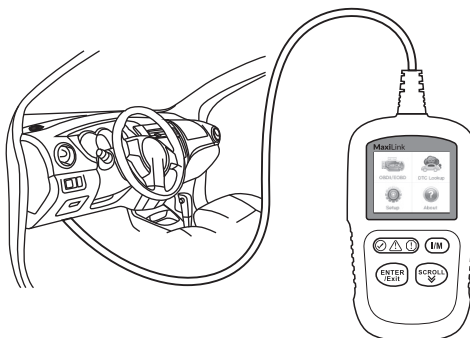
IMPORTANT: Before operating or maintaining this unit, please read these instructions carefully. Use this unit correctly and properly. Failure to do so may cause damage and/or personal injury and will void the product warranty.

1



- Scan QR Code to visit our website at www.autel.com.
- Create an Autel ID and register the product with device's SN and password.

2



- Connect the main cable's adapter to the vehicle's DLC which is generally located under the vehicle dash.
- The device will be automatically powered up and your ML329 is now ready to work.

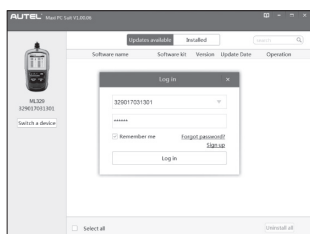


Please download the Maxi PC Suite from

www.autel.com > Support & Updates > Firmware & Downloads > Update Client, and install to your Windows-based computer.

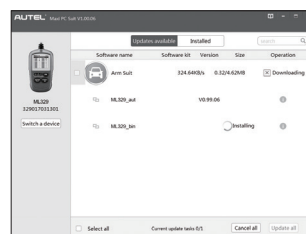
Software Update and Delete

1



- Run the Maxi PC Suite. Wait for the Log In window to display.
- Connect the device with the computer using the included USB cable.
- Select Update Mode in the tool.
- Enter your Autel ID and password and wait for the Update window to display. If you forget your password, click the [Forget Password?] link to our website and retrieve your password. Or click Sign up to create an Autel ID to continue.
- Select tool and serial number, click OK to continue.

2



- In the Update window, select the appropriate files to install.
- Click on the Installed tag and the list of installed programs will display.
- Select the program(s) you would delete.

For service and support, please contact us.

<http://pro.autel.com> / www.autel.com / support@autel.com
0086-755-86147779 (China HQ) / 1-855-288-3587/1-855-AUTELUS (North America)
0049 (0) 61032000522 (Europe) / (+507) 308-7566 (South America) / 03 9480 2978 / +61 476293327 (Australia)