

Thank you for purchasing this Autel tool. This tool is manufactured to a high standard and will provide years of trouble-free performance when used in accordance to these instructions and properly maintained.

Getting Started



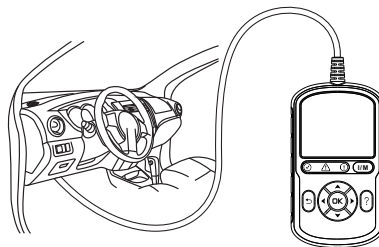
IMPORTANT: Before operating or maintaining this unit, please read these instructions carefully. Failure to use this unit correctly may cause damage and/or personal injury and will void the product warranty.

1



- Scan the QR code to visit our website at pro.autel.com.
- To update the AL549, please create an Autel ID and register the product with its serial number and password. The serial number and password can be found by selecting **Setup > About** on the tool screen.

2

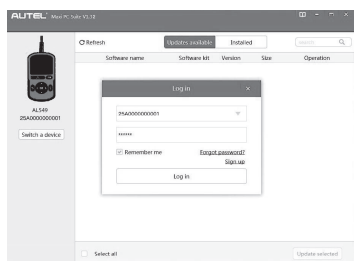


- Connect the OBDII cable's 16-pin male adapter to the vehicle's Data Link Connector (DLC), which is generally located under the vehicle dashboard.
- The tool will be automatically powered on.
- Your AL549 is now ready for use.

Software Update and Delete

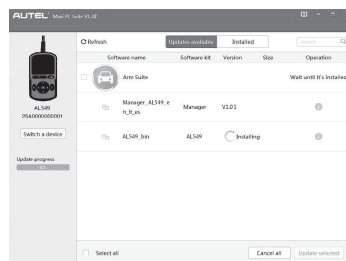
Please download the **Maxi PC Suite** from: www.autel.com > **Support > Downloads > Autel Update Tools**, and install to your windows-based computer.

1



- Connect the device with the computer using a Type-C USB cable.
- Run the **Maxi PC Suite**. Select **Update Mode** in the tool. Wait for the Log In window to display.
- Enter your Autel ID and password and wait for the Update window to appear. If you forgot your password, click **Forgot Password** to retrieve it. If you do not already have an Autel ID, you can click **Sign up** to create a new account.
- Select the product type and serial number, click **OK** to continue.

2



- In the Update window, select the items you want to install.
- Click on the **Installed** tag and the page will show the list of programs installed. Select the items you want to delete.

NOTE: The interfaces in this quick guide are for reference only.