

AUTEL IS THE **ONLY** TPMS MANUFACTURER TO OFFER A

COMPLETE SOLUTION

POWERFUL SCAN TOOLS

HIGH QUALITY SENSORS



AUTEL MX-SENSORS CAN ONLY BE PROGRAMMED BY AUTEL TPMS SCAN TOOLS

ITS600

PG.2-3

TBE200

PG.4-5

1 SENSOR

PG.6-7

TS508 SERIES

PG.8-9

TS608

PG.10-11

MS906TS

PG.13

ACCESSORIES

PG.14-15

MAXITPMS ITS600

INTELLIGENT TIRE SERVICE POWERED BY AUTEL DIAGNOSTICS

FREE

WI-FI SOFTWARE UPDATES
FOR THE LIFE OF THE TOOL

Fast & Accurate Vehicle ID:

AutoVIN, VINscan
& Plate Scan



INTELLIGENT TIRE SERVICE

AUTEL UPDATES PROVIDE LATEST OE LEVEL COVERAGE FOR US / ASIAN / EUROPEAN VEHICLES (1996 TO PRESENT) INCLUDING SUPERCARS



P/N: ITSUPDATE
ITS600 PRO UPGRADE

EXPAND DIAGNOSTIC & SERVICE FUNCTIONS

- All System AutoSCAN & Diagnostics
- 20+ Service Functions
- Read/Clear All System Codes / View Live Data
- 1 Year of **FREE** Diagnostics Updates
- 1 Year of **FREE** Service Updates

ALREADY INCLUDED WITH ITS600*

- Complete TPMS Functionality
- 4 Service Functions: OLS / BMS / SAS / EPB
- **FREE** Updates for the Life of the Tool for included TPMS & Service Functions

P/N: 700150
ITS600 PRO

COMING SOON!

GET ALL THE EXPANDED DIAGNOSTIC & SERVICE FUNCTIONS WITHOUT A SEPARATE UPGRADE. ALL INCLUDED IN **ONE PURCHASE**.



WI-FI SOFTWARE UPDATES

MULTIPLE KIT OPTIONS AVAILABLE! CONTACT YOUR AUTEL DISTRIBUTOR

ITS600 Sensor Kit

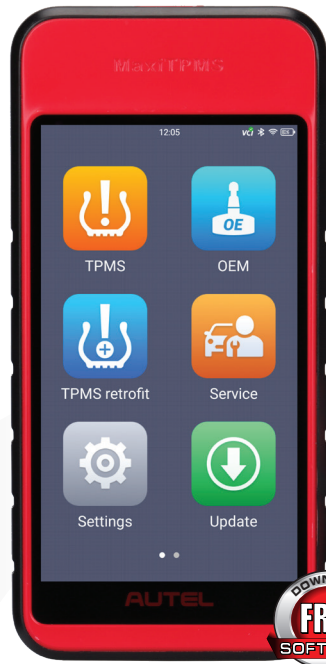
Includes 8 1-Sensors
 P/N: 700130

EXPANDED TIRE SERVICE WITH TBE200



MORE INFO PAGES 4&5

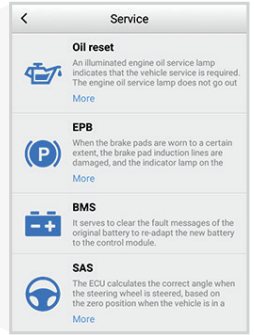
ITS600



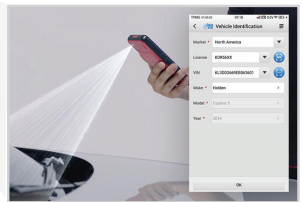
5.5-INCH SCREEN



DIAGNOSTICS & SERVICE



QUICK VEHICLE ID TECHNOLOGY



Rapid VIN Acquisition Via Optical VINScan
 QR Code Scan / Barcode Scan, Plate Scan, Auto VIN Detect and Manual Input
 Identify MMY and Sensor OE Part Number Via VIN Decoding



Optical Scanner Identifies VIN/MMY

Exclusive TPMS Screen

Fast OBD II Relearn for Most Vehicles

Copy By OBD Sensor Programming

Batch Program Up to 20 MX-Sensors

Read & Relearn All Brand Sensors



MAXITPMS TBE200

TREAD DEPTH MEASUREMENT & BRAKE DISC WEAR ANALYSIS



LASER TREAD
ANALYSIS



BRAKE DISC
WEAR ANALYSIS



TIRE HEALTH ANALYSIS

FEATURE HIGHLIGHT



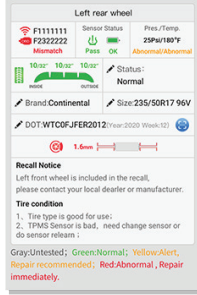
EXPANDED TIRE SERVICE

- Integrates with Autel ITS600
- Quick & Easy Tire DOT Number Scan
- Tire Expiration Notice
- Tire Recall Lookup Tread Depth & Brake Disc Wear



TBE200

REAL-TIME TIRE HEALTH ANALYSIS WHEN USED WITH ITS600



MAGNETIC STAND INCLUDED

1.65-INCH SCREEN

COMPREHENSIVE TEST REPORT



Tread wear analysis:
In good condition.
Maintenance suggestion: The tire is in good condition. It can be driven about X kilometers more. Please check it on a regular basis.

Tire condition

Tire size

Tire DOT code

Retest

- 1.65" AMOLED Super Retina Touchscreen
- 1MP Macro Camera
- 8MP Zoom Camera

- Measurement Data Curve Display / Uneven Wear Analysis
- Detailed Replacement & Maintenance Suggestions
- Test Detail For Single Tire Tread / Brake Disc

MX-SENSOR 1-SENSOR

COMBINE BOTH FREQUENCIES 315 MHz + 433 MHz

ONLY 1-SKU TYPE

AUTEL MX-SENSORS MUST BE PROGRAMMED AT ZERO PSI IF ALREADY INSTALLED



AUTEL

1 SENSOR

OE QUALITY SENSOR

315 MHz + 433 MHz

COMBINE BOTH FREQUENCIES

99% VEHICLE COVERAGE



**RUBBER / ALUMINUM
INTERCHANGEABLE
VALVE STEMS**

RUBBER 1-SENSOR
P/N: 1-SENSOR R

ALUMINUM 1-SENSOR
P/N: 1-SENSOR M



P/N: MXSENSORMVK

ALUMINUM VALVE KIT

4 Pack of Aluminum Valve Stems

Interchangeable with Rubber Valve Stems

ALSO SOLD INDIVIDUALLY P/N: MV1000



P/N: MXSENSORVK

RUBBER VALVE KIT

4 Pack of Rubber Valve Stems

Interchangeable with Aluminum Valve Stems

ALSO SOLD INDIVIDUALLY P/N: RV1000

FEATURE HIGHLIGHT



INTERCHANGEABLE
VALVE STEMS



99%
COVERAGE



PRESS
RELEASE



QUALITY
CONTROL



LIGHT
WEIGHT



MAX SIGNAL
STRENGTH



BATTERY
RELIABILITY

ADJUSTABLE ANGLE 1-SENSOR

15°-30°
ADJUSTABLE
ANGLE



RUBBER
P/N: 300020

ALUMINUM
P/N: 300030



P/N: 500020

ALUMINUM VALVE KIT

4 Pack of Aluminum Valve Stems

Interchangeable with Rubber Valve Stems

Only for the Adjustable Angle 1-Sensor



P/N: 500010

RUBBER VALVE KIT

4 Pack of Rubber Valve Stems

Interchangeable with Aluminum Valve Stems

Only for the Adjustable Angle 1-Sensor

99% VEHICLE
COVERAGE

PRESS RUBBER / METAL
INTERCHANGEABLE
VALVE STEMS

MAXITPMS TS508 SERIES

ADVANCED TPMS SERVICE TOOL



Quick Mode

**EASY & FAST
QUICK MODE**



Advanced Mode

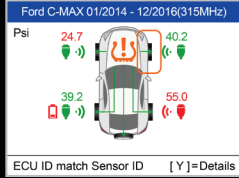
**POWERFUL
ADVANCED MODE**

ADVANCED TPMS SERVICE

AUTEL UPDATES PROVIDE LATEST OE LEVEL COVERAGE FOR US / ASIAN / EUROPEAN VEHICLES (1996 TO PRESENT) INCLUDING SUPERCARS

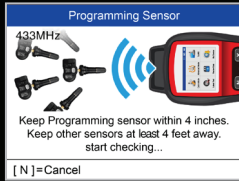
FEATURE HIGHLIGHT

1. DIAGNOSE



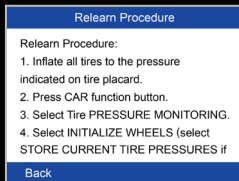
CHECK ALL TPMS SENSORS

2. REPLACE



PROGRAM AUTEL MX-SENSORS

3. CONFIRM



ON-TOOL RELEARN PROCEDURE



TS508



Read & Relearn All Brand Sensors 4 MX-Sensor Programming Methods

FREE Updates for Life of Tool Tire Pressure Placard Value Reset

Exclusive TPMS Status Screen Display Relearn Procedures



MULTIPLE KIT OPTIONS AVAILABLE! CONTACT YOUR AUTEL DISTRIBUTOR

SENSOR KIT AVAILABLE

TS508KMV-1

INCLUDES 8 I-SENSORS & 1 METAL VALVE KIT



TS508WF

WIFI SOFTWARE UPDATES



P/N: 700010

Read & Relearn All Brand Sensors 4 MX-Sensor Programming Methods

FREE Updates for Life of Tool Tire Pressure Placard Value Reset

Exclusive TPMS Status Screen Display Relearn Procedures



MULTIPLE KIT OPTIONS AVAILABLE! CONTACT YOUR AUTEL DISTRIBUTOR

SENSOR KIT AVAILABLE

TS508WFKMV-1

INCLUDES 8 I-SENSORS & 1 METAL VALVE KIT

P/N: 700060



MAXI TPMS TS608

ADVANCED SERVICE + ALL SYSTEM DIAGNOSTICS + COMPLETE TPMS

HIGHEST
RETURN ON
INVESTMENT



AutoVIN 2006+

AutoSCAN

ALL MODULES + ALL SYSTEMS

Single Screen Listing Health Report
Of All DTCS With Detailed Repair Tips

3 SERVICE TOOLS IN ONE

AUTEL UPDATES PROVIDE LATEST OE LEVEL COVERAGE FOR US / ASIAN / EUROPEAN VEHICLES (1996 TO PRESENT) INCLUDING SUPERCARS

FEATURE HIGHLIGHT

20+ SERVICE FUNCTIONS & RESETS



COMPLETE TPMS

- Read/Activate/Relearn All Known Sensors
- Display Sensor ID, Battery Condition (select sensors) and Psi
- Detect & Display All TPMS System Faults
- Display On-Tool Relearn Procedures
- Placard Value Reset on Supported Vehicles
- Key Fob Signal Test



TS608



1-YR FREE SOFTWARE

TOTAL CARE PROGRAM (TCP) \$295⁰⁰
ADDITIONAL 1 YEAR COVERAGE

TS608K-1 Sensor Kit

Includes 8 1-Sensors
P/N: 700040



MaxiTPMS TS608

7-INCH SCREEN



OBDII PORT



WIRELESS MAXISYS-VCIMINI



OE-Level Vehicle Coverage

US / Asian / European 1996+

AutoSCAN / AutoVIN 2006+

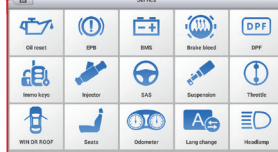
4 MX-Sensor Programming Options

Complete TPMS Service

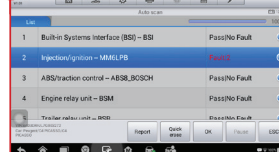
Diagnostic Reports



20 SERVICE FUNCTIONS



AUTOSCAN ALL MODULES



TPMS STATUS SCREEN



TPMS PROGRAMMING

PROGRAMMABLE UNIVERSAL TPMS SENSOR

Program MX-Sensors
using Autel TPMS Scan
tools before installation

01



Install the MX-Sensor

*If the MX-Sensor is already installed,
deflate the tire to zero psi before programming*

02



Check the Autel exclusive
Status Screen to check
TPMS system health

03



AUTEL MX-SENSORS ARRIVE BLANK + CAN ONLY BE
PROGRAMMED BY AN AUTEL TPMS SCAN TOOL

FEATURE HIGHLIGHT

4 PROGRAMMING METHODS

1. COPY BY OBD

- IDs from previous sensors are acquired from the TPMS module & cloned into the blank MX-Sensor

2. COPY BY ACTIVATION

- IDs are cloned from previous TPMS sensors via triggering/activating

3. COPY BY MANUAL INPUT

- IDs are acquired via OBDII or activation of the old sensors & manually entered into the blank MX-Sensor

4. AUTO CREATE

- IDs are created randomly with a generator built into scan tool
- IDs are based off the vehicle year, make & model



WIFI SOFTWARE UPDATES



OBDII CONNECTOR KIT INCLUDED

1-YR FREE SOFTWARE

TOTAL CARE PROGRAM (TCP) \$795⁰⁰
ADDITIONAL 1 YEAR COVERAGE



WIRELESS
MAXISYS-VCI100

PRE-SCAN & POST-SCAN



Compatible with MAG00 ADAS System*

OE-Level Vehicle Coverage

AutoSCAN / AutoVIN 2006+

Bi-Directional Control

Complete Service Features

Advanced Coding & Adaptations

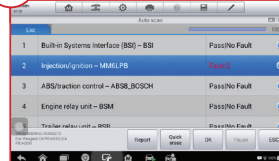
*SD Card May Be Required



TPMS STATUS SCREEN



AUTOSCAN ALL MODULES



20 SERVICE FUNCTIONS



1-SENSOR BULK PACKS



240-PACK

240 Bulk Pack of 1-Sensors

Rubber Valve Stems

P/N: 300050



P/N: 300010

20-PACK

20 Bulk Pack of 1-Sensors

Rubber Valve Stems

ALSO AVAILABLE WITH
ALUMINUM VALVE STEMS P/N: 300060



P/N: 300040

8-PACK

8 Bulk Pack of 1-Sensors

Rubber Valve Stems



P/N: CV-001



P/N: CV-002



P/N: CV-003

VALVE COLORS

Interchangeable Aluminum Valve Stems

Black, Titan Grey & Chrome (sold separately)

TPMS STICKER



ADJUSTED TIRE - GOLD INFLATION TIRE PRESSURE -		
TIRE SIZE	Load Index	Cold Tire Pressure
REAR: FRONT:		

P/N: PVS100

TPMS Pressure Placard Value Sticker
Pack of 100

COMPONENT KIT



MX-SENSOR COMPONENT KIT	
Metal Valve Component Kit – Screw Nut	2x10 pcs
Metal Valve Component Kit – Washer	2x10 pcs
Metal Valve Component Kit – Rubber Gasket	2x10 pcs
Metal Valve Component Kit – Cap	2x10 pcs
Rubber Valve Component Kit – Cap	2x10 pcs
Metal/Rubber Valve Component Kit – Valve Core	2x10 pcs
Rubber Valve	4x1 pcs
Metal Valve	4x1 pcs

P/N: MXSENSORK

MX-Sensor Valve Stem Replacement Kit
Rubber & Aluminum Valve Stem Pieces

PROMO KIT

SPEAK TO YOUR ADEL REPRESENTATIVE FOR DETAILS

AUTEL Logo Stickers
(1"x6" each)

Counter Sensor Display
(approx. 10"x4.5"x4")

TPMS Service Poster
(18"x36")

TPMS Service Door Sign
(5"x7.5")

TPMS Support Magnet
(3.5"x2")

TPMS Tech Support Card
GET YOUR ANSWERS

TPMS Diagnostic Postcard
TPMS DIAGNOSE

Large TPMS Service Poster (18"x36")

TPMS Diagnose Instructional Postcard (7"x5")

NEVER IGNORE YOUR TIRE PRESSURE LIGHT

- Increased Risk of Tire Damage
- Longer Braking Distances
- Decreased Fuel Economy
- Poor, Wet Weather Performance
- Bad Vehicle Emergency Handling

AUTEL®

ITS600

TBE200

1 SENSOR

TS508 SERIES

TS608

MS906TS

ACCESSORIES

LIMITED WARRANTY

To ensure latest vehicle coverage, register and update tool upon receipt.

STANDARD POLICY

Autel guarantees to the original end-user customer that its products are free from defects in material and workmanship up to a specified period of time depending on the product.

Autel, will repair or replace warranted products at its discretion:

- Replaced products will either be new or re-certified
- All re-certified products will be tested to ensure hardware and software are functionally equivalent to new products

DO NOT OPEN AUTEL PRODUCTS:

- Opening an Autel product may cause damage to the tool that is not covered by this limited warranty
- Contact Autel Tech Support for any needed service
- To replace batteries on out-of-warranty tools, contact Autel Tech Support (a service fee will be charged)

This limited warranty does not apply to:

- Product with a cracked screen, broken case, chemical exposure or liquid damage
- Damaged product due to accident, abuse, misuse, natural disaster, insufficient or excessive electrical supply, abnormal mechanical or environmental conditions or unauthorized disassembly, repair or modification
- Consumable parts, such as batteries or protective coatings that are designed to diminish over time, unless failure has occurred due to a defect in materials or workmanship
- Product not used in accordance with accompanying instructions or intended use
- Stolen products or Product with an altered or removed original identification number

SERVICE PROCEDURE

- Any defective products require a Return Goods Authorization (RGA) number from Autel to be serviced
- Contact Autel Tech Support to obtain an RGA number
- The end-user is responsible for the cost of insuring and shipping products to Autel for repair or replacement
- Autel will cover the return shipping cost of the repaired or replacement tool with the same delivery speed by which it was received
- Tools must be properly packaged to prevent damage during transit
- The Autel RGA number must be prominently displayed on the outside of the package
- Package received by Autel without the RGA number prominently displayed will be returned, unopened
- Autel cannot guarantee the security of a unit that is shipped without an Autel-issued RGA

FREE SOFTWARE UPDATES

The following tools are eligible for free software updates for **ONE (1) YEAR** from date of tool registration.

- **MaxiTPMS TS608**
- **MaxiSYS MS906TS**

The following tools are eligible for free software updates for the **LIFETIME OF THE TOOL** from date of tool registration.

- **MaxiTPMS ITS600**
- **MaxiTPMS TS508WF**
- **MaxiTPMS TS508**

WARRANTY INFORMATION

The following tools and accessories are covered under the Autel Limited Warranty for **ONE (1) YEAR** from date of tool purchase. *1-Sensors are covered from the date of purchase, for 24-months or a distance of 24,000 miles, whichever comes first.*

- **MaxiTPMS ITS600**
- **MaxiTPMS TBE200**
- **MaxiTPMS TS508**
- **MaxiTPMS TS508WF**
- **MaxiTPMS TS608**
- **MaxiSYS MS906TS**

*TPMS, OLS, BMS, SAS and EPB updates for the ITS600 are free for the lifetime of the tool. Service and diagnostic functions are free for 1 year and will require an additional TCP purchase when the 1 year expires.

Autel North America
Email: ussupport@autel.com
175 Central Ave, Suite 200,
Farmingdale, NY 11735, U.S.

Autel Europe
Email: support.eu@autel.com
Robert-Bosch-Strasse 25,
63225 Langen,
Germany

Autel China HQ
Email: support@autel.com
7th, 8th and 10th Floor, Building
B1, Zhiyuan, Xueyuan Road, Xili,
Nanshan, Shenzhen, 518055, China

Autel Latin America
Email: latinsupport@autel.com
Avenida Americas 1905, 6B,
Colonia Aldrete, Guadaluajara,
Jalisco, Mexico

Autel APAC
Email: support.jp@autel.com
719, Nissou Building, 3-7-18,
Shinyokohama, Kouhoku, Yokohama,
Kanagawa, Japan 222-0033

Autel IMEA DMCC
Email: imeas-support@autel.com
Office 1006-1010, Cluster C, Fortune
Tower, Jumeirah Lakes Tower (JLT),
Dubai, U.A.E



Phone: (855) 288-3587 • USSUPPORT@AUTEL.COM
AUTEL.COM • MAXITPMS.COM • MAXISYSADAS.COM

© 2021 Autel U.S. Inc., All Rights Reserved

